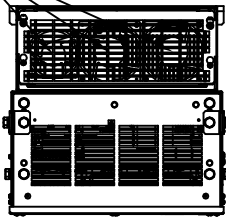
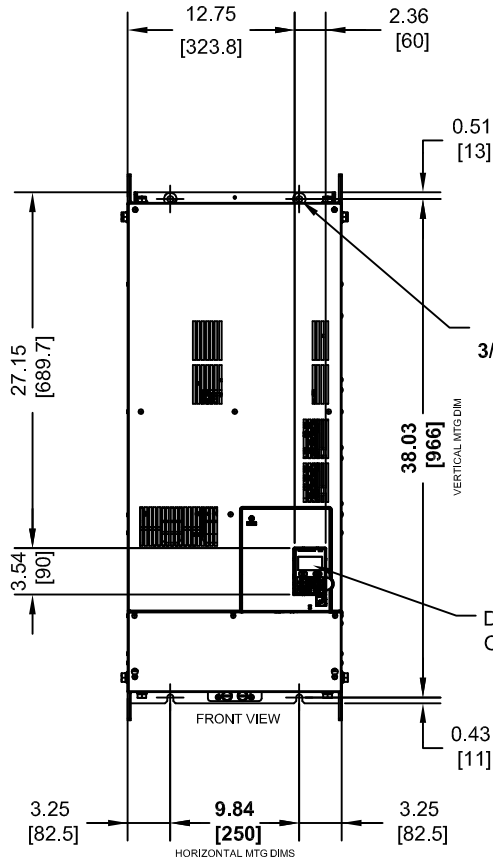


(3) EXTERNAL COOLING FANS



LIFTING NOTES:

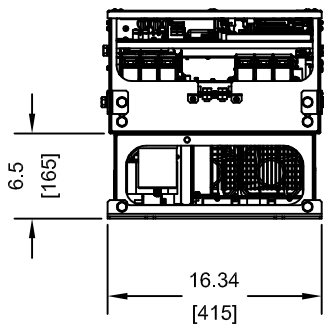
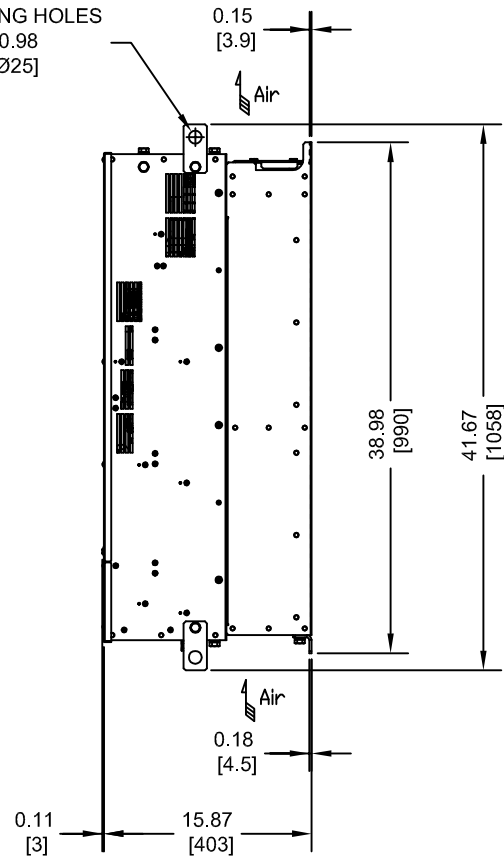
1. SPREADER BAR REQUIRED TO AVOID DAMAGE DURING LIFTING.
2. FOUR (4) LIFTING BRACKETS NEEDED ON TOP SIDE FOR VERTICAL LIFTING. REFER TO MANUAL FOR DETAILS.



(4)-LIFTING HOLES  
Ø0.98 [Ø25]

(4)-MOUNTING HOLES FOR 3/8" [M10] SCREWS

DIGITAL OPERATOR



MODEL # CIMR-UW	VOLTAGE 3-PHASE (VAC)	OUTPUT CURRENT (A)	WEIGHT LBS (Kg)	HEAT LOSS (W) (Fc=4kHz)		
				INT	EXT	TOT
2□0154□□□	200/240	154	242 (110)	366	2441	2807
2□0192□□□		192	242 (110)	447	3064	3511
4□0156□□□	380/500	156	242 (110)	421	2857	3278
4□0180□□□		180	242 (110)	482	3316	3798

NOTES:

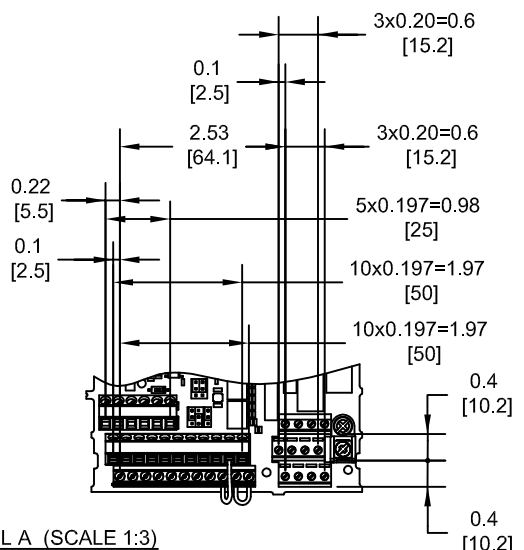
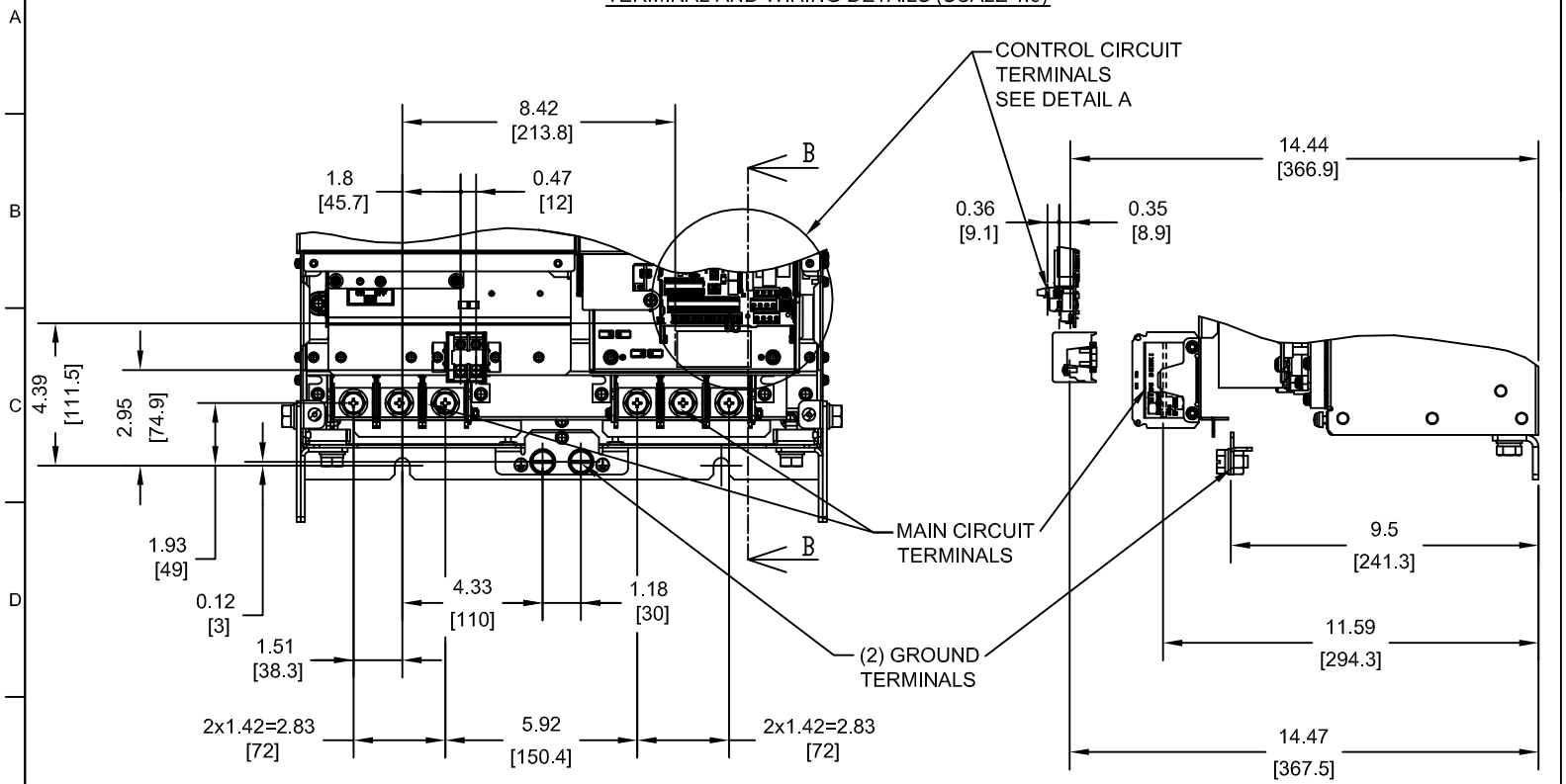
- DENOTES A-Z
- DENOTES AAA-ZZZ

INT=INTERNAL COMPONENTS  
EXT=EXTERNAL HEATSINK  
TOT=TOTAL

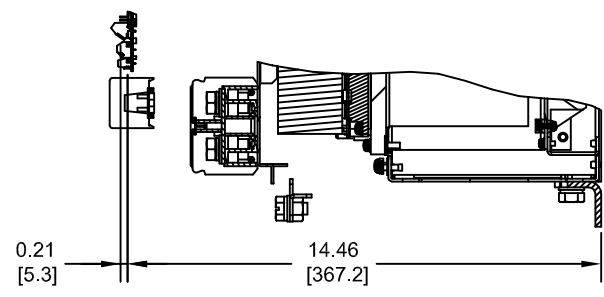
FOR ADDITIONAL DETAILS AND SPECIFICATIONS, CONSULT MANUAL

TOLERANCES / REFERENCES:		<b>YASKAWA</b>	DRAWN: J. MATTAS	DATE 9-22-16	TITLE: U1000 iQpump DIMENSION DRAWING FRAME SIZE 4 IP00 ENCLOSURE		
			CHECKED: J. PIOTROWSKI	DATE 9-29-16	2□0154, 2□0192, 4□0156 AND 4□0180		
		THIS DOCUMENT AND INFORMATION CONTAINED IN IT ARE CONFIDENTIAL, AND CANNOT BE COPIED OR DISCLOSED IN WHOLE OR IN PART WITHOUT THE EXPRESS WRITTEN CONSENT OF YASKAWA AMERICA, INC.	TECH: J. BORJA	DATE 10-3-16	SIZE A	REVISION R00	PAGE 1 of 3
UNITS: IN[mm]	SCALE: 1:15		APPROVED: J. CAIRO	DATE 10-20-16	DRAWING #: <b>DD.UW1K.FR4.IP00</b>		
		ORIGINAL DESIGN:	-	DATE			

TERMINAL AND WIRING DETAILS (SCALE 1:6)



DETAIL A (SCALE 1:3)  
CONTROL CIRCUIT TERMINALS



SECTION B-B

TERMINAL AND WIRE SPECIFICATIONS FOR MAIN CIRCUIT AND GROUND

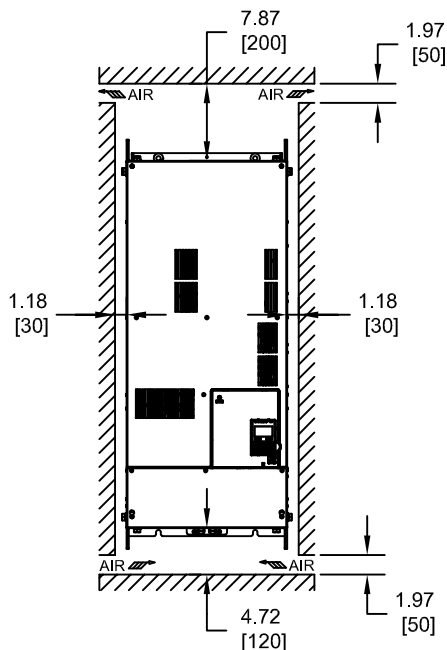
MODEL # CIMR-UW	TERMINAL SYMBOL	TERMINAL SCREW	CLAMPING TORQUE lb.in.(N.m.)	WIRE RANGE AWG(mm <sup>2</sup> )
2□0154	R/L1, S/L2, T/L3	M10	133 TO 177 (15 TO 20)	10 TO 4/0 (6 TO 95)
2□0192	U/T1, V/T2, W/T3			
4□0156	p1, n1	M4	10.6 TO 17.7 (1.2 TO 2.0)	14 TO 12 (2.5 TO 4)
4□0180	⊕	M10	156 TO 200 (17.7 TO 22.6)	4 TO 2/0 (25 TO 70)

NOTE: REFER TO APPLICABLE CODES FOR PROPER WIRE TYPE AND SIZE

TOLERANCES / REFERENCES:		<b>YASKAWA</b>	DRAWN: J. MATTAS	DATE 9-22-16	TITLE: U1000 iQpump DIMENSION DRAWING FRAME SIZE 4 IP00 ENCLOSURE 2□0154, 2□0192, 4□0156 AND 4□0180
			CHECKED: J. PIOTROWSKI	DATE 9-29-16	
		TECH: J. BORJA		DATE 10-3-16	SIZE A
		APPROVED: J. CAIRO		DATE 10-20-16	
UNITS: IN[mm]	SCALE: BY VIEW	ORIGINAL DESIGN: -		DATE -	PAGE 2 of 3
					DRAWING #: <b>DD.UW1K.FR4.IP00</b>

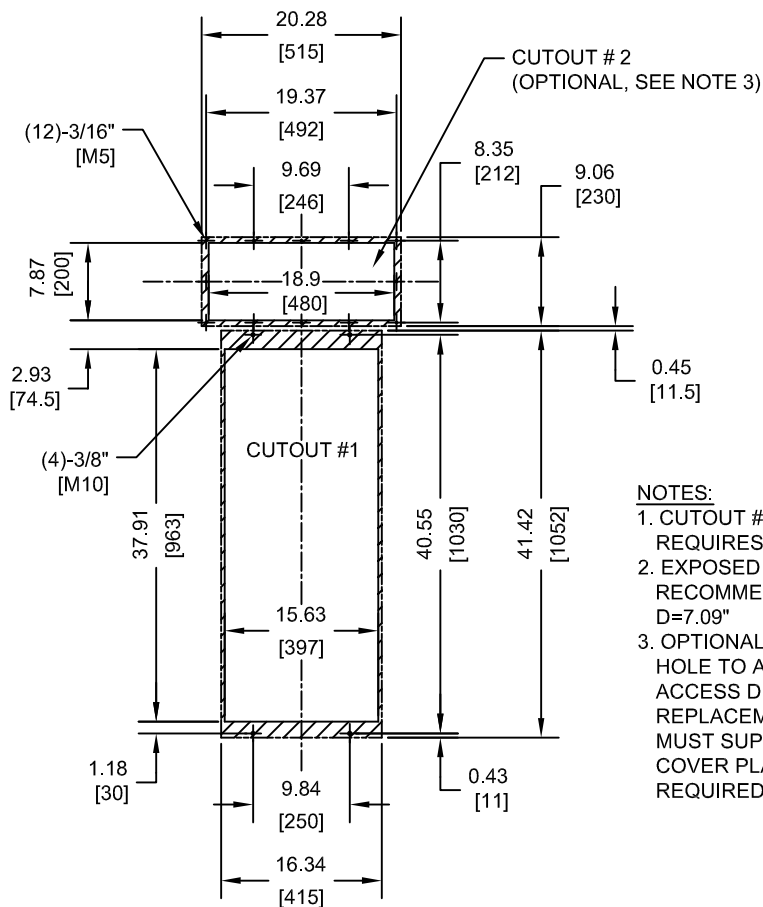
THIS DOCUMENT AND INFORMATION CONTAINED IN IT ARE CONFIDENTIAL, AND CANNOT BE COPIED OR DISCLOSED IN WHOLE OR IN PART WITHOUT THE EXPRESS WRITTEN CONSENT OF YASKAWA AMERICA, INC.

MINIMUM INSTALLATION CLEARANCES (SCALE 1:20)



NOTE:  
FOR SIDE-BY-SIDE MOUNTING  
CONSULT MANUAL

PANEL CUTOUT FOR EXTERNAL HEATSINK  
MOUNTING CONFIGURATION (SCALE 1:20)



- NOTES:
1. CUTOUT #1: EXTERNAL HEATSINK, REQUIRES MOUNTING KIT
  2. EXPOSED HEATSINK RECOMMENDED CLEARANCE D=7.09"
  3. OPTIONAL CUTOUT #2 IS AN ACCESS HOLE TO ALLOW FOR FRONT ACCESS DURING HEATSINK COOLING FAN REPLACEMENT. THE PANEL BUILDER MUST SUPPLY THE APPROPRIATE COVER PLATE AND HARDWARE REQUIRED TO CLOSE THIS OPENING.

FOR ADDITIONAL DETAILS AND SPECIFICATIONS, CONSULT MANUAL

TOLERANCES / REFERENCES:		<b>YASKAWA</b>	DRAWN: J. MATTAS	DATE 9-22-16	TITLE: U1000 iQpump DIMENSION DRAWING	
			CHECKED: J. PIOTROWSKI	DATE 9-29-16	FRAME SIZE 4	
		TECH: J. BORJA		DATE 10-3-16	IP00 ENCLOSURE	
		APPROVED: J. CAIRO		DATE 10-20-16	SIZE A	REVISION R00
UNITS: IN[mm]	SCALE: BY VIEW	ORIGINAL DESIGN: -		DATE -	PAGE 3 of 3	
				DRAWING #: <b>DD.UW1K.FR4.IP00</b>		

THIS DOCUMENT AND INFORMATION CONTAINED  
IN IT ARE CONFIDENTIAL, AND CANNOT BE  
COPIED OR DISCLOSED IN WHOLE OR IN PART  
WITHOUT THE EXPRESS WRITTEN CONSENT  
OF YASKAWA AMERICA, INC.